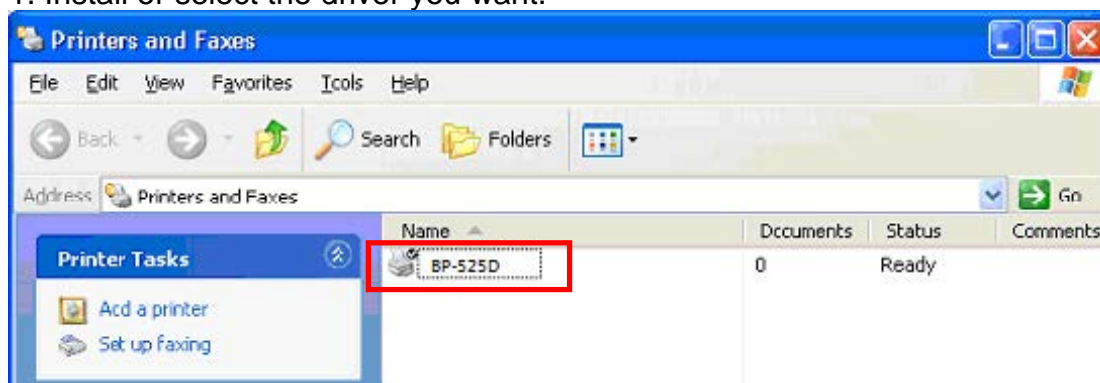
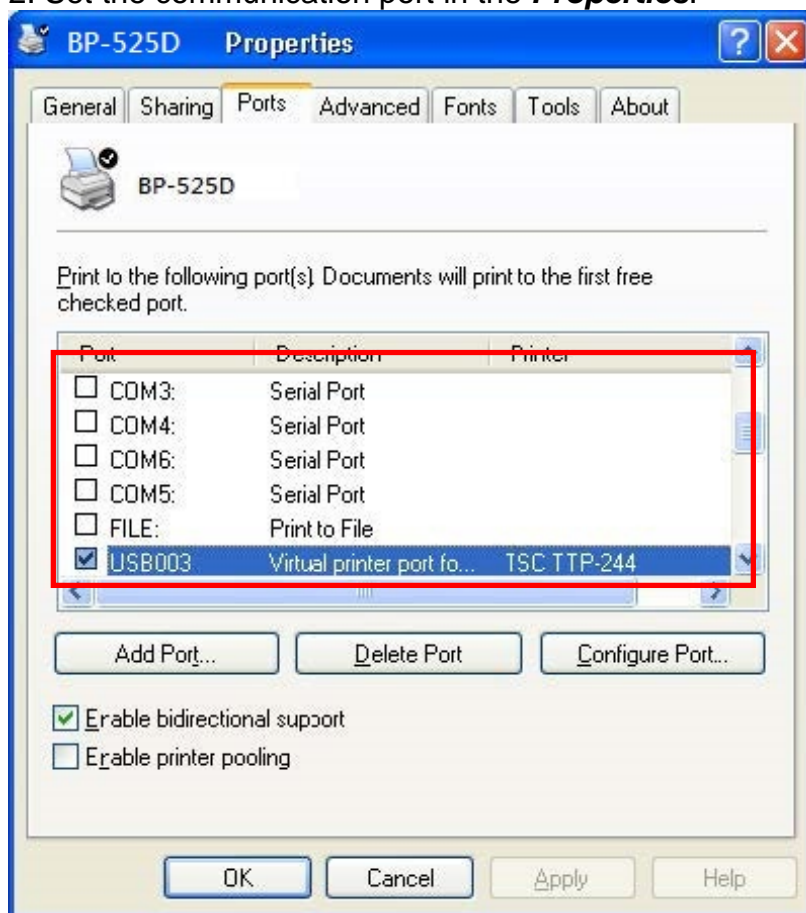


How to update firmware by Seagull Driver?

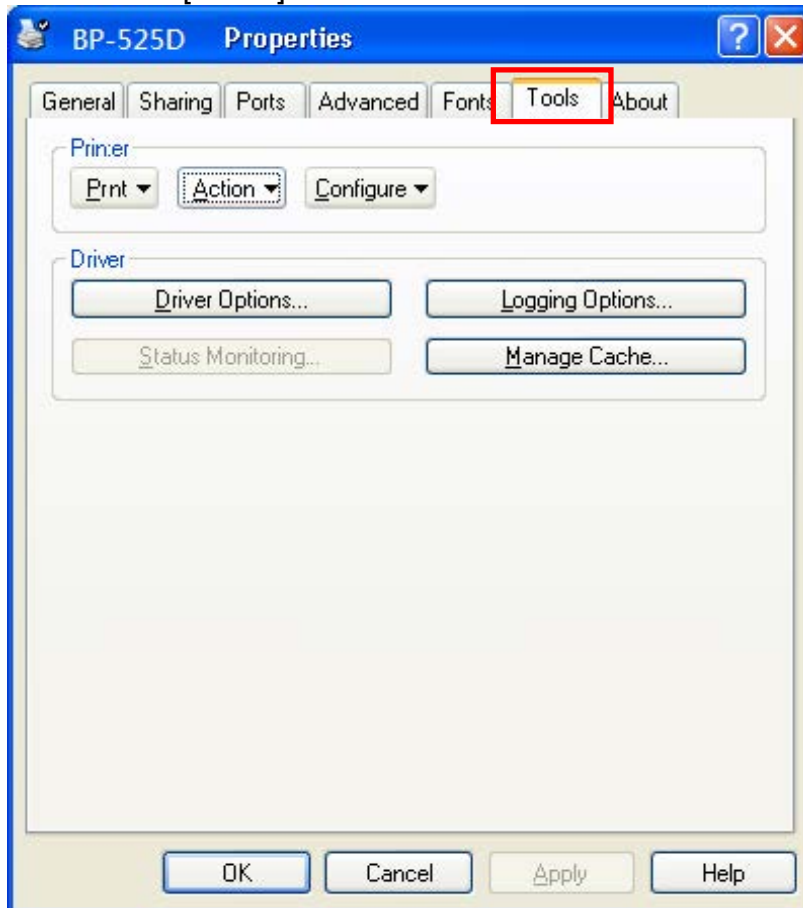
1. Install or select the driver you want.



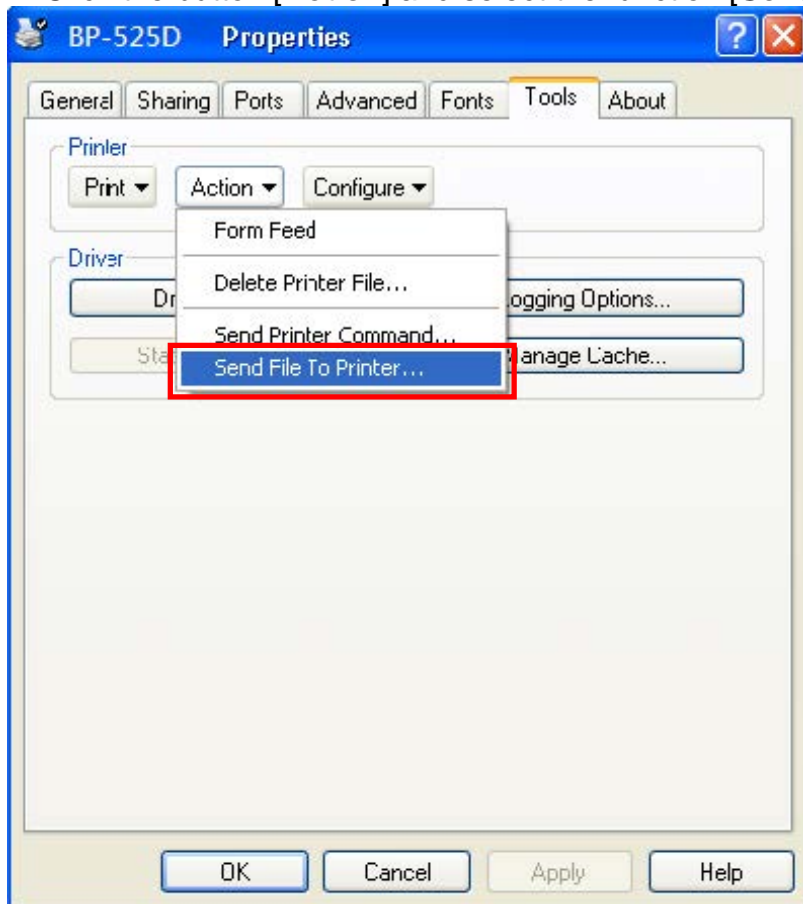
2. Set the communication port in the **Properties**.



3. Enter the [**Tools**] tab.



4. Click the button [**Action**] and select the function [**Send File To Printer**].



5. Set the **Files of type** as **All Files (*.*)** and select the **firmware file (*.NEW)** and click the button [**Open**] to start firmware updating.

